

# CENTRAL PROPERTY MANAGEMENT

WM. CALLBECK CENTRE  
950 CALLBECK ST, CENTRAL BEDEQUE,  
PRINCE EDWARD ISLAND, CANADA

## Rental Rate

**\$8.00/SF + HST**

**Includes heat, garbage collection, insurance, parking, full time property maintenance.  
Tenant responsible for electricity.**



## FEATURES

**Centrally Located in Prince Edward Island**

**12 km (7 miles) from the Confederation Bridge in Borden-Carleton, 12 km (7 miles) from Summerside and 45 km (28 miles) from Charlottetown**

**Fully Renovated Facility**

**Dedicated high speed internet available, security access control system in place, lunchroom and training space, common boardroom fully equipped and seats 30, on-site Restaurant and Fitness Centre.  
Building is fully wheelchair accessible.**

**Available Units**

**Varying size units 202, 209, 213, 214, 218 and 220**



CENTRAL DEVELOPMENT CORP.

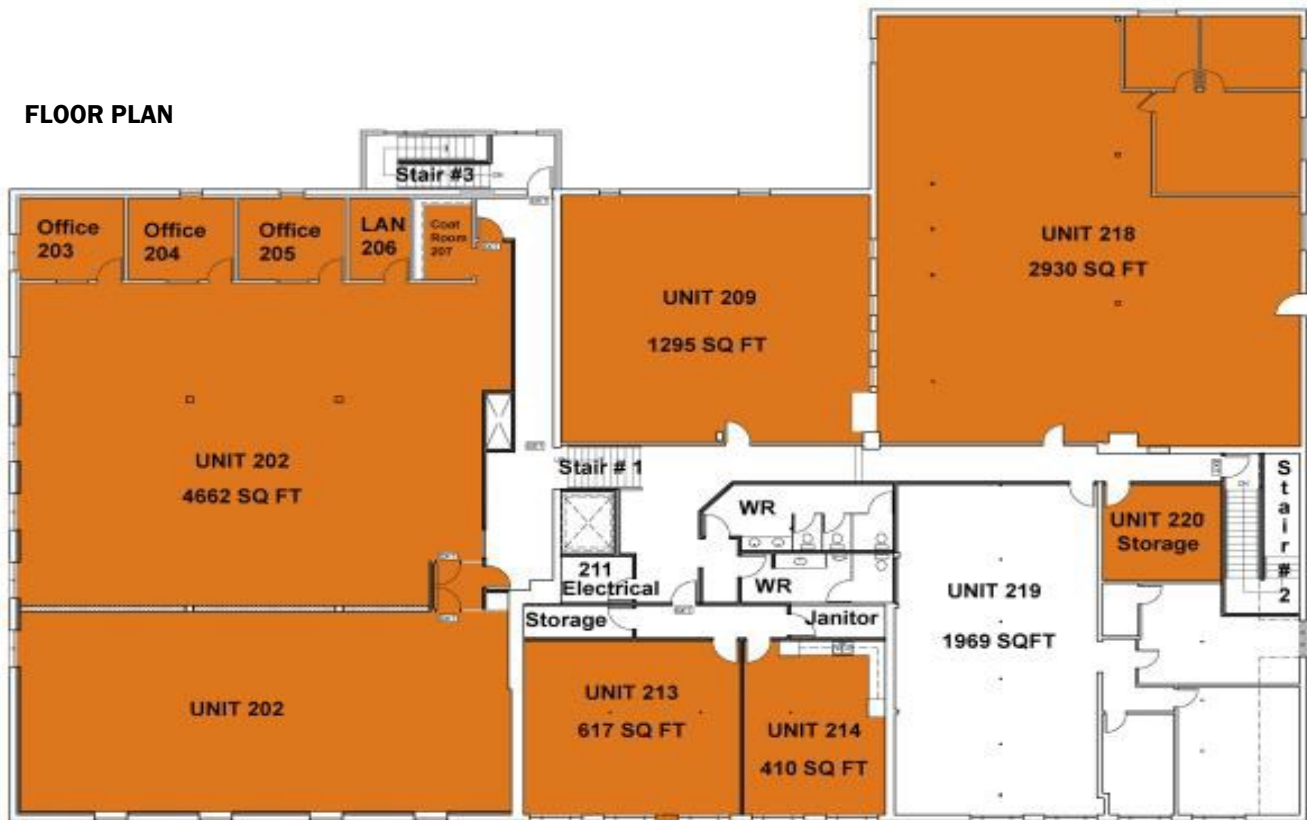
**106 Linkletter Avenue,  
Central Bedeque, PE  
Telephone: (902) 887-3400**

**[info@centralpei.ca](mailto:info@centralpei.ca)**

**[www.centraldevelopmentcorp.com](http://www.centraldevelopmentcorp.com)**

**W M . C A L L B E C K   C E N T R E**  
**9 5 0   C A L L B E C K   S T ,   C E N T R A L   B E D E Q U E ,**  
**P R I N C E   E D W A R D   I S L A N D ,   C A N A D A**

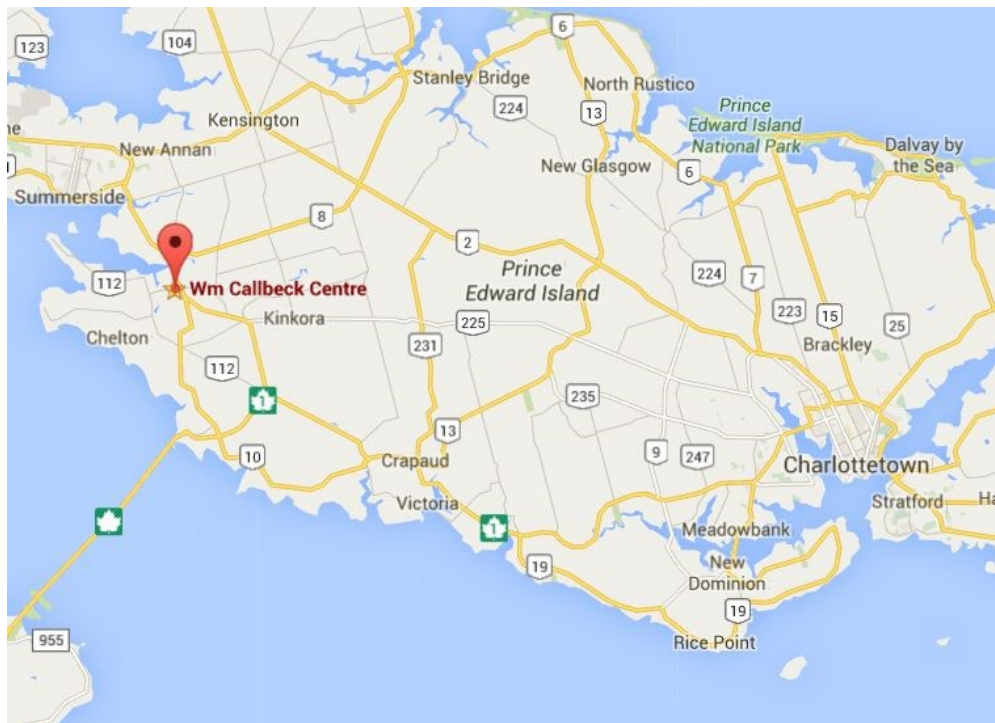
**FLOOR PLAN**



Wm. Callbeck Centre

**SECOND FLOOR PLAN**

**LOCATION**





**WM. CALLBECK CENTRE  
950 CALLBECK ST, CENTRAL BEDEQUE,  
PRINCE EDWARD ISLAND, CANADA**

**Site Photos**

